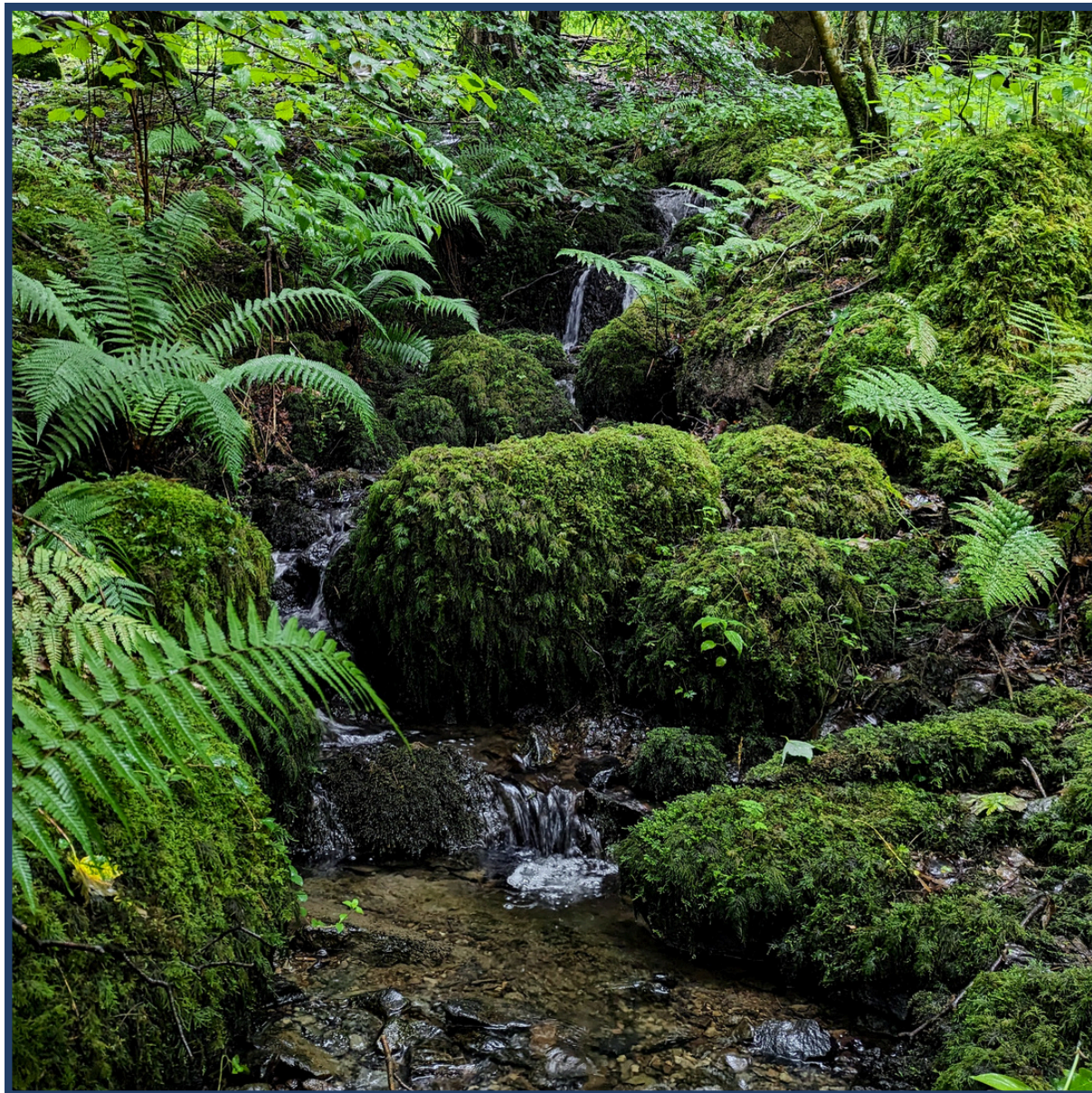


NATURALNESS PRACTICE IMAGE GUIDE

HIGH NATURALNESS EXAMPLES



PHYSICAL

1

HYDROLOGICAL

1

CHEMICAL

1

BIOLOGICAL

1

The stream follows a natural rocky cascade made up of moss-covered boulders. The riparian zone is a healthy woodland species distribution (tree cover just visible in background). Hydrology is natural with no signs of abstraction or impoundment. The water is clear with no visible filamentous algae or sewage fungus. No invasive species are present.



PHYSICAL

1

HYDROLOGICAL

1

CHEMICAL

1

BIOLOGICAL

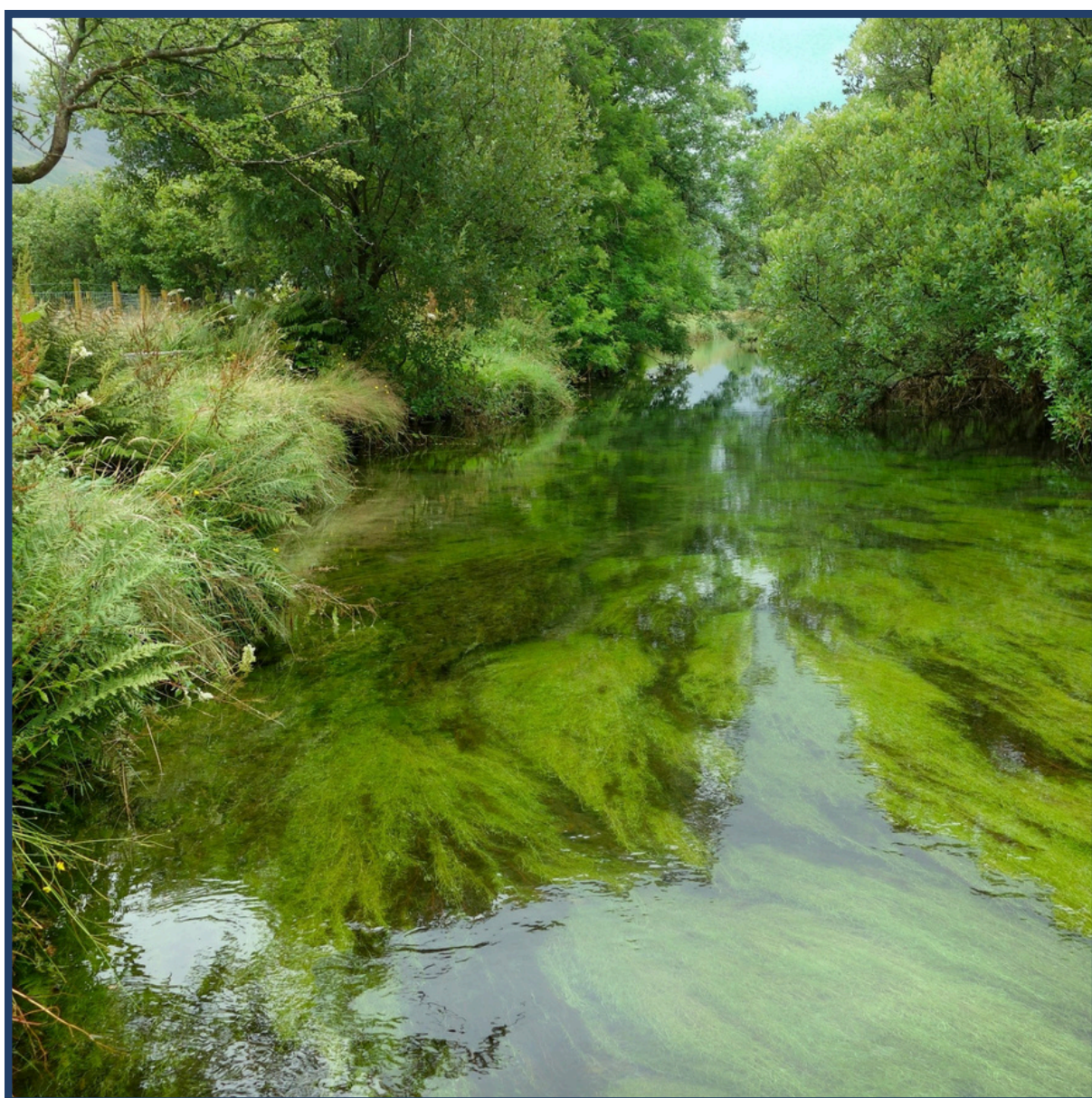
1

Seasonal stream caused by flooding. Natural woodland assemblage (winter so less vegetation) and natural channel. Clear water with no sign of algae or sewage fungus. No invasive species are present.



PHYSICAL	2
HYDROLOGICAL	2
CHEMICAL	1
BIOLOGICAL	1

There is a healthy wetland riparian zone surrounding this stream, with good tree cover and woody material present. There is a small concrete spring head cover in the foreground that slightly lowers the physical and hydrological naturalness. The water is clear with no visible filamentous algae or sewage fungus. No invasive species are present.



PHYSICAL	1
HYDROLOGICAL	1
CHEMICAL	1
BIOLOGICAL	1

No physical modifications are present. The riparian zone is healthy with a good assemblage of riparian and aquatic plant species. No hydrological modifications are visible. Water is very clear (note that this is not filamentous algae but aquatic plants). No invasive species are present.



PHYSICAL	2
HYDROLOGICAL	1
CHEMICAL	1
BIOLOGICAL	1

A wide shallow river with minimal embankments along farside trees. Part of a restoration project to improve natural function so multiple channels are present across developing wetland. No visible hydrological modifications, chemical issues or invasive species.



PHYSICAL	1
HYDROLOGICAL	1
CHEMICAL	1
BIOLOGICAL	1

Small stream running through a fern-filled ravine with no visible signs of modifications or chemical issues. Riparian zone is healthy and no invasive species are present. Likely to be a stream with intermittent flow and drying up during warmer months.